

WIPCOinformer

What's inside...

Message for Our Members.....2
What's Happening.....3
Co-op Savings.....4
Student Opportunities.....5
Energy Trail Tour.....6

Have you visited our website?

We're excited to announce that updates have been made to our website, enhancing both its functionality and user experience. These improvements are just the beginning! Over the next few months, we will continue making updates to better serve you. Stay tuned for new features, content, and easier navigation to keep you connected with all things WIPCO. Be sure to visit www.wipco.com to see what's new!



Western Iowa Power Cooperative's mission is to enhance our members' quality of life by providing safe and reliable electric services.

WIPCO Offers Scholarship Opportunities

Western Iowa Power Cooperative (WIPCO) in conjunction with Basin Electric Power Cooperative (BEPC) will be awarding six scholarships for the 2025-2026 school year. This program, now in its 35th year, recognizes and encourages academic and community achievements of students whose parents are WIPCO members.

BEPC will award one \$1,000 scholarship and WIPCO will award one \$1,000 and four \$500 scholarships. Two of the \$500 scholarships will be designated specifically for students enrolling in vocational and/or technical schools.

The scholarship must be used for educational costs, and the student must enter college in the fall of the school year for which the scholarship is given. Scholarships will be awarded without regard to other awards, loans, or financial assistance the applicant may have obtained. Previous scholarship award winners are not eligible.

A selection committee will choose the recipients of the scholarships. The selection committee's decisions are final. Awards are based on the following criteria: grade point average, work experience, participation in school and community activities, a personal statement of career goals, and a written recommendation by a third party. We ask that if the student has taken a college entrance exam (ACT and/or SAT), that score be included with their application materials. Should a student plan to attend a college that does not require ACT/SAT, please indicate that on the application form.

Applicant must be a US citizen and the dependent of a WIPCO member. Applicant must be a student who is enrolled or planning to enroll in a full-time undergraduate or graduate course of study at an accredited, two-year or four-year college, university, or vocational/technical school.

Applications must be received at a WIPCO location (Denison or Onawa) no later than February 7th, 2025



Revolving Loan Fund & Economic Development

At Western Iowa Power Cooperative (WIPCO), we are proud to play an integral role in the economic development of the communities we serve. One of the ways we contribute to growth and opportunity is through our Revolving Loan Fund (RLF), a program designed to stimulate local businesses, create jobs, and strengthen our local economy.

What is the RLF?

The Revolving Loan Fund (RLF) is a low-interest loan program made available to local businesses, organizations, and communities within our service area. The fund is a renewable financial resource, as repayments from previous loans are reinvested to support new projects. This cyclical nature ensures that the benefits of the program extend far beyond the initial investment, helping to sustain long-term economic growth.

Strengthen Local Business

From small startups to established enterprises, the RLF provides crucial financial support for a variety of business needs, including:

- Building and facility improvements
- Equipment purchases
- Working capital
- Infrastructure development

These funds have already supported numerous businesses across Crawford and Monona Counties, fostering innovation and enabling entrepreneurs to turn their visions into reality.

Strengthening Community

In addition to business development, the RLF is also available for projects that benefit the broader community. Examples include:

- Enhancing public facilities
- Supporting community infrastructure

These initiatives not only improve the quality of life for residents but also attract new opportunities and investment to our region.

How to Apply

Businesses and organizations interested in applying for a loan through the RLF are encouraged to contact WIPCO for more information. Our team will guide applicants through the process, ensuring they understand the requirements and can present their project effectively.



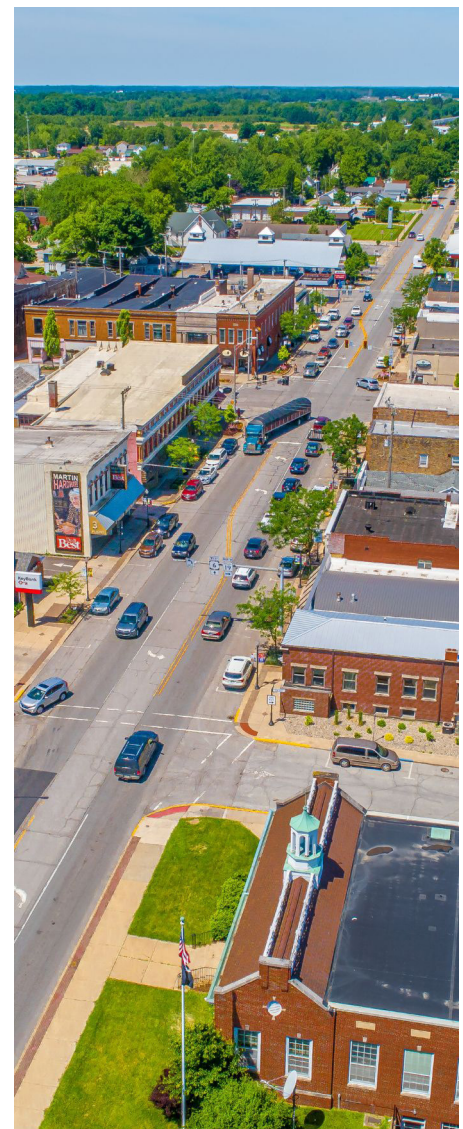
A Shared Commitment

Beyond the RLF, WIPCO actively participates in broader economic development efforts. We collaborate with local chambers of commerce, development boards, and community leaders to identify opportunities and create strategies that align with the unique needs of our service area. Together, we're building a foundation for sustainable growth that benefits everyone.

Why It Matters

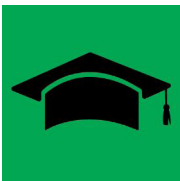
At WIPCO, we believe that strong communities and thriving businesses go hand in hand. By offering financial tools like the Revolving Loan Fund and engaging in economic development initiatives, we are fulfilling our mission to empower our members and contribute to the vitality of Western Iowa.

For more information about the Revolving Loan Fund or other economic development initiatives, please visit our website or contact our office. 07-11-1192





JD Parks Graduates from Cooperative Leadership in Iowa Program



Congratulations to JD Parks, our Director of Finance and Administrative Services, on his recent graduation from the Cooperative Leadership in Iowa Program (CLIP). Over the past year, JD devoted countless hours to completing a comprehensive leadership training program designed specifically for cooperative leaders in Iowa. Through this program, he gained valuable insights and enhanced his leadership skills to better serve Western Iowa Power Cooperative and its members. JD's hard work and dedication exemplify WIPCO's commitment to continuous improvement and excellence. We are proud of his accomplishments and excited to see how his enhanced skills will contribute to the future success of our cooperative. Well done, JD!



Stephanie Wiese shares WIPCO's Vision and Support for Local Growth



Stephanie Wiese, Interim General Manager at Western Iowa Power Cooperative, recently spoke with the Leading Edge Group, a local network dedicated to leadership development and business growth. During her presentation, Stephanie highlighted WIPCO's economic development efforts and its impact on the counties serviced by WIPCO. She also discussed the cooperative's Revolving Loan Fund, which provides financial assistance to support local businesses and community projects. Her insights emphasized how WIPCO is driving positive change and fostering opportunities for growth in the region.

Cheers to a Bright New Year from WIPCO!

Happy New Year from all of us at Western Iowa Power Cooperative! As we welcome 2025, we reflect on the successes of the past year and look forward to another year of serving our members and supporting our communities. Wishing you a year filled with health, happiness, and prosperity!



Welcome Gabe Gilgen, Apprentice Lineman, to WIPCO!

Join us in welcoming Gabe Gilgen to the Western Iowa Power Cooperative team! Gabe, from Modale, Iowa, officially joined WIPCO full-time on November 11th after completing a successful summer internship with us. A recent graduate of Metro College's lineworker program, Gabe loves the atmosphere of being a lineman, learning something new every day, and helping people in the community. When he's not working, Gabe enjoys golfing and hunting. We're excited to have him on board and look forward to the contributions he'll make to the cooperative!



2025 resolution: be energy efficient year-round

Seal in comfort and savings

As energy consumers, we can all play a part in conserving resources and reducing our bills. Here are some practical tips to boost your home's energy efficiency throughout the year:

Know your energy consumption

Start by reviewing your energy bills for the past 12–24 months. Calculate your average monthly usage to establish a baseline for measuring your energy-saving efforts.

Adopt no-cost ways to save energy

Small changes can lead to significant savings:

- Turn off lights and unplug electronics such as chargers when not in use.
- Close or lower window coverings to regulate the temperature indoors.
- Change your air filters regularly as recommended.
- Use ceiling fans strategically: counterclockwise in summer and clockwise in winter to force warm air down. 50-06-16627
- Grill outdoors in summer to keep the heat out of the kitchen.

Insulate your home

Weatherproofing is key to maintaining comfort and reducing energy use:

- Check for air leaks around windows and doors using the wet finger or tissue test.
- Apply caulk or weather stripping to prevent drafts.
- Remember to keep doors closed to maintain indoor temperature.

Get smart with your thermostat

Optimize your heating and cooling by using your programmable thermostat's features — many homeowners never use them — and allow it to adjust the temperature when you're asleep or away.

- Consider upgrading to a smart thermostat for automatic adjustments
- In general, adjust the thermostat a few degrees up or down for energy savings.



NEED HELP WITH YOUR HEATING BILL?

The 2024-2025 Low-Income Home Energy Assistance Program (LIHEAP) has been established to help qualifying low-income Iowa homeowners and renters pay for a portion of their primary heating costs for the winter heating seasons.

The assistance is based on household size, type of fuel, and type of housing.

If you are not sure where to apply you can dial 2-1-1, visit <https://hhs.iowa.gov/> to locate and contact your local community action agency, or write to:

LIHEAP
Iowa Department of Health & Human Services
Capitol Complex
Des Moines, IA 50319

WIN \$25 OFF YOUR NEXT ENERGY BILL

Hidden somewhere within the pages of each Western Iowa Power Cooperative Informer are two member's location numbers. Find your location number in a monthly newsletter and call our offices by the 20th of that month, and you will receive a \$25.00 credit on your energy bill the following month!

The location numbers in November's newsletter belonged to Marty Knudsen and Rick Gay.

Join the 2025 Youth Tour: An Unforgettable trip to D.C.

Western Iowa Power Cooperative is excited to announce the 2025 Youth Tour, offering high school students a unique, all-expenses-paid opportunity to explore the nation's capital, learn about the U.S. government, and develop leadership skills.

What is Youth Tour?

Since 1958, Iowa's electric cooperatives have sponsored high school students for a week long tour of Washington, D.C. Participants gain insights into American history, the legislative process, and the cooperative business model, fostering a deeper understanding of their role as citizens.

Why Participate?

The Youth Tour is more than a trip; it's an investment in our futures. You will develop leadership skills, gain a comprehensive understanding of the U.S. government, and learn about the importance of civic engagement.

How to Apply:

Applications are open. To apply, visit WIPCO's website or contact our office.

Application deadline: March 7th, 2025.

Highlights of the Tour

Historical Sites: Visit landmarks such as the Washington Monument, Lincoln Memorial, and Mount Vernon.

Educational Experiences: Explore the Smithsonian museums and the Holocaust Memorial.

Government Engagement: Meet with Iowa's congressional leaders and spend a day on Capitol Hill.

Networking: Connect with over 1,800 students from across the country, building lasting friendships.

Dates: June 15-21, 2025

Eligibility: Highschool sophomores, juniors, and seniors residing in WIPCO's service area.

Application Process: Visit www.wipco.com to find more information and view the application.



Investing in the Future: WIPCO Scholarships

Applications for the 2025 scholarship program are live now on our website. Scholarship applications are due on February 7th, 2025. High school seniors within WIPCO's service territory are encouraged to apply. For more details, including eligibility requirements and deadlines, visit our website or contact our office.

Western Iowa Power Cooperative offers a unique and educational experience with its Energy Trail Tour, a hands-on opportunity for members to learn more about the cooperative's services and energy efficiency initiatives. The tour provides an inside look at the technology and infrastructure that power the region, including renewable energy sources, system upgrades, and smart grid technology. Participants can engage with knowledgeable staff, who explain how energy is generated, transmitted, and delivered to homes and businesses. The Energy Trail Tour is designed to help members better understand the cooperative's efforts to improve energy reliability, reduce costs, and support sustainable practices. It's an informative and interactive experience for anyone interested in the future of energy in western Iowa.

Find more information below, and enter for a chance to go on the Energy Trail Tour by clipping the coupon below or by filling out the form on our website.



Energy Trail Tour 2025

Western Iowa Power Cooperative and Northwest Iowa Power Cooperative invite you to join us for one of three Energy Trail Tours being offered this summer. This 3-day adventure will allow you to experience,

first-hand, how your power providers convert energy from water, wind, and coal into electricity. View coal being mined and see how those mines are then returned to productive farm and native grass lands. Enjoy interactive walking tours through a hydroelectric and coal-fired energy generation facility and other stops along the way. Meet other cooperative member-owners while traveling together across the Dakotas on-board a motor-coach bound for the North Dakota's Energy Loop. \$100 per couple covers your lodging, meals and entry fees. The remainder of your tour costs are covered by Western Iowa Power Cooperative. Nine lucky couples from Western Iowa Power Cooperative will be selected at random from those who sign up.



YES, please enter our names in the drawing for the trip. We understand that if our names are drawn, we will be billed \$100.

Our first and second choice of dates:

- | | | | | |
|------------|-----|-----|-----|-----------------|
| June 18-20 | 1st | 2nd | 3rd | (please circle) |
| June 25-27 | 1st | 2nd | 3rd | |
| July 9-11 | 1st | 2nd | 3rd | |

I/we have have not participated in this tour in the past.

First Person _____

Second Person _____

Address _____

City _____

Phone _____

Clip this coupon and return to cooperative by April 25, 2025.

Underground digging and excavating

Excavation safety

For professional excavators such as construction workers and contractors, ensuring safety is crucial. Beneath every site lies a network of utility lines — electric, water, gas and telecommunications. Striking these lines can cause:

- Costly delays.
- Expensive repairs.
- Service disruptions to the community.
- And most importantly, serious injury or death.
- Contacting 811

Contacting 811 before digging helps prevent these risks.

When you contact 811, they will notify relevant utility companies to mark underground lines, free of charge, using colored flags or paint. This process usually only takes a few days.

Different colors are used to mark underground utilities, and each color is universal:

- Red – electric
- Orange – communications, telephone/CATV
- Blue – potable water
- Green – sewer/drainage
- Yellow – gas/petroleum
- Purple – reclaimed water
- White – premark site of proposed excavation

Best practices for digging

After receiving utility markings, follow these practices:

- Respect the marks. Dig carefully around them.
- Maintain markings. Refresh if they fade or are removed.
- Verify responses. Ensure all utilities have reported.
- Hand dig in tolerance zones. Use hand tools within 18–24 inches of marked utilities.
- Remember, 811 does not locate private utilities. Hire a private locator for systems including underground sprinklers, invisible fences, data communication systems or gas piping to a garage.

Training and communication

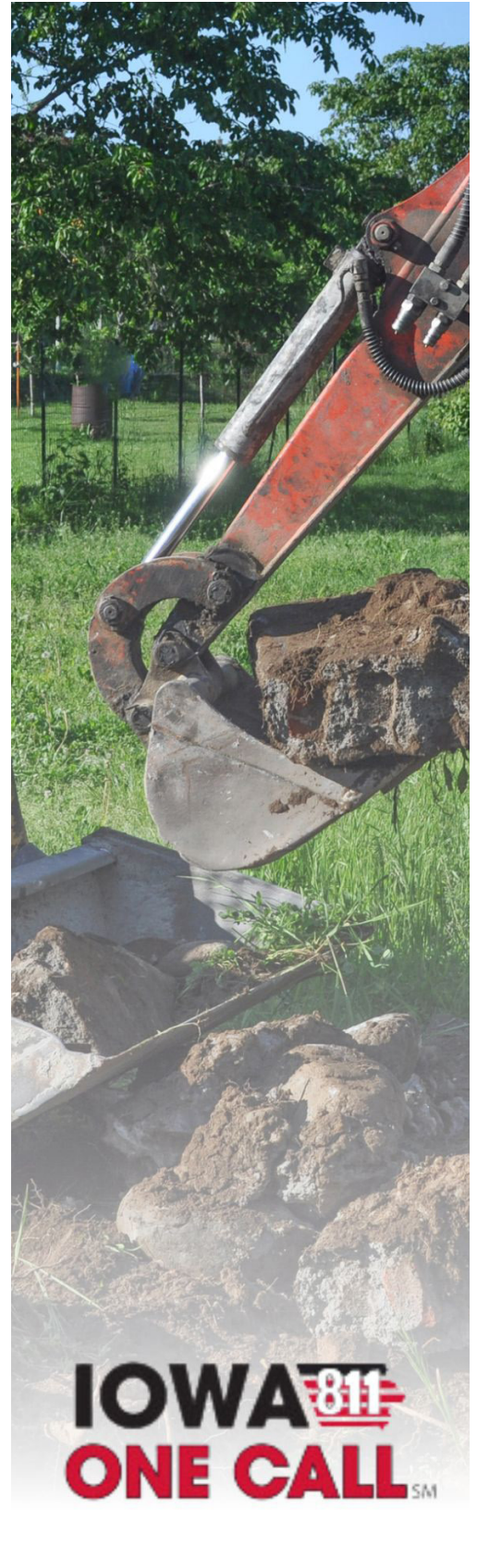
Train your team on excavation procedures and the importance of contacting 811. Regular toolbox talks can reinforce safe practices and potentially save lives.

Failing to contact 811 is unsafe and often illegal. Many states have laws requiring excavators to use the 811 system and to premark proposed sites, with potential fines for non-compliance.

Your responsibility

Always contact 811 before any excavation, no matter what the project size. Once utilities are located, wear proper protective gear before digging.

Whether you're digging a foundation for a skyscraper or installing a fence post, check before you dig. It's free, easy and helps keep your crew and the community out of harm's way. Prioritizing 811 reflects your commitment to safety and professionalism. Stay informed, stay prepared, and stay safe!





Download the WIPCO App

Take control of your energy account with the Western Iowa Power Cooperative app! With just a few taps, you can easily view and pay your bill, monitor your energy usage, and stay updated with important notifications and news from WIPCO. The app is free, user-friendly, and available for download on both iOS and Android devices. It's a convenient way to manage your account anytime, anywhere.

Search for "Western Iowa Power Cooperative" in your app store and experience the ease of staying connected to your cooperative. Download it today and simplify your energy management!

Leadership

Stephanie Wiese, Interim General Manager

Board of Directors

Janet Iversen, Ross Wood, Craig Riesberg, Gary Volkert, Brian Lundell, Louis Reed, Mike Blum, Bart Heisterkamp, Peter Alexander, Ken Smith

Informer Editor

Sadie Reisz, Communications & Benefits Coordinator



Co-op Fun Fact: How Much Does a Utility Pole Weigh?

Have you ever wondered how much a utility pole weighs? The answer might surprise you! A standard wooden pole typically weighs around 600 pounds, and that's before any hardware is added. Once equipped with cross-arms, transformers, and power lines, the weight can double.

These poles are specially treated to endure extreme weather conditions and support the critical equipment that powers your home. Every utility pole plays a vital role in maintaining the reliability of our electric grid.

Next time you drive past one, take a moment to appreciate the hard work and engineering that go into keeping your electricity flowing.

Contact Us

WIPCO Office Hours

📍 809 Highway 39 North, Denison, Iowa
Monday - Friday: 7:00 a.m. - 3:30 p.m.

📍 413 East Iowa Avenue, Onawa, Iowa
Monday - Friday: 8:00 a.m. - 11:00 a.m.

Give Us a Call!

Toll Free: 800-253-5189

Find Us Online!

wipco.com
wipco@wipco.com
@WesternIowaPowerCoop